



► **2020 CENSUS AND
REDISTRICTING**

FULLERTON SCHOOL DISTRICT

OCTOBER 12, 2021



COOPERATIVE
STRATEGIES
ASSESS • PLAN • FUND • BUILD

► DISTRICT DEMOGRAPHICS
2020 CENSUS DATA



- Validated redistricting data was released by the California Department of Finance on September 20.
- This data showed substantial changes in the area served by Janny Meyer from 2010 to 2020, including:
 - Overall population growth of over 6,727 (5.7%);
 - Changes in the demographic composition, most notably, increases in the proportional share of Asian and Hispanic/Latino populations.

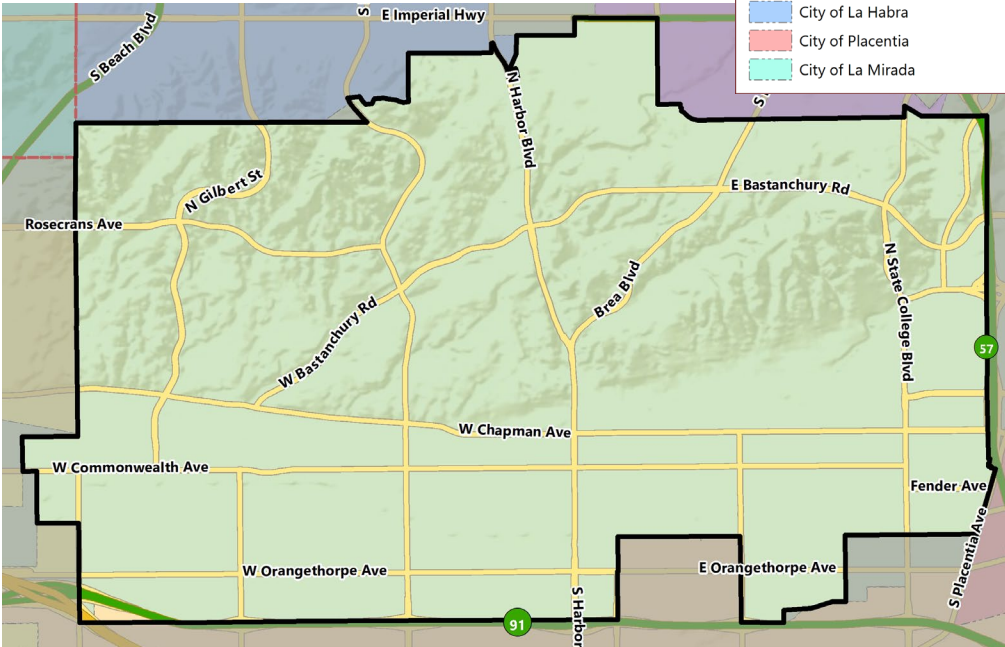
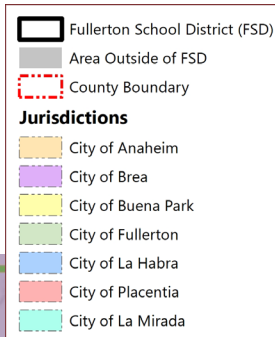
Population (Within 5 Districts)	Total Population			
	2010 Census	2020 Census	Total Change	Percent Change
Trustee Area 1	24,613	24,527	-86	-0.3%
Trustee Area 2	24,163	24,731	568	2.4%
Trustee Area 3	23,047	24,317	1,270	5.5%
Trustee Area 4	23,502	27,433	3,931	16.7%
Trustee Area 5	22,939	23,983	1,044	4.6%
Total Population	118,264	124,991	6,727	5.7%

► **DISTRICT DEMOGRAPHICS**
2010 to 2020 CENSUS COMPARISON

Trustee Area	2010 Census		2020 Census		Change	
	Total	Percent	Total	Percent	Population	Percent
Hispanic/Latino	41,195	34.8%	47,050	37.6%	5,855	14.2%
White	45,060	38.1%	36,814	29.5%	-8,246	-18.3%
Black/ African American	2,242	1.9%	2,460	2.0%	218	9.7%
American Indian/Alaska Native	223	0.2%	264	0.2%	41	18.4%
Asian	26,611	22.5%	33,197	26.6%	6,586	24.7%
Native Hawaiian/ Pacific Islander	243	0.2%	211	0.2%	-32	-13.2%
Other	193	0.2%	609	0.5%	416	215.5%
Two or More Races	2,497	2.1%	4,386	3.5%	1,889	75.7%
Total Population	118,264	100%	124,991	100%	6,727	5.7%

► DISTRICT DEMOGRAPHICS

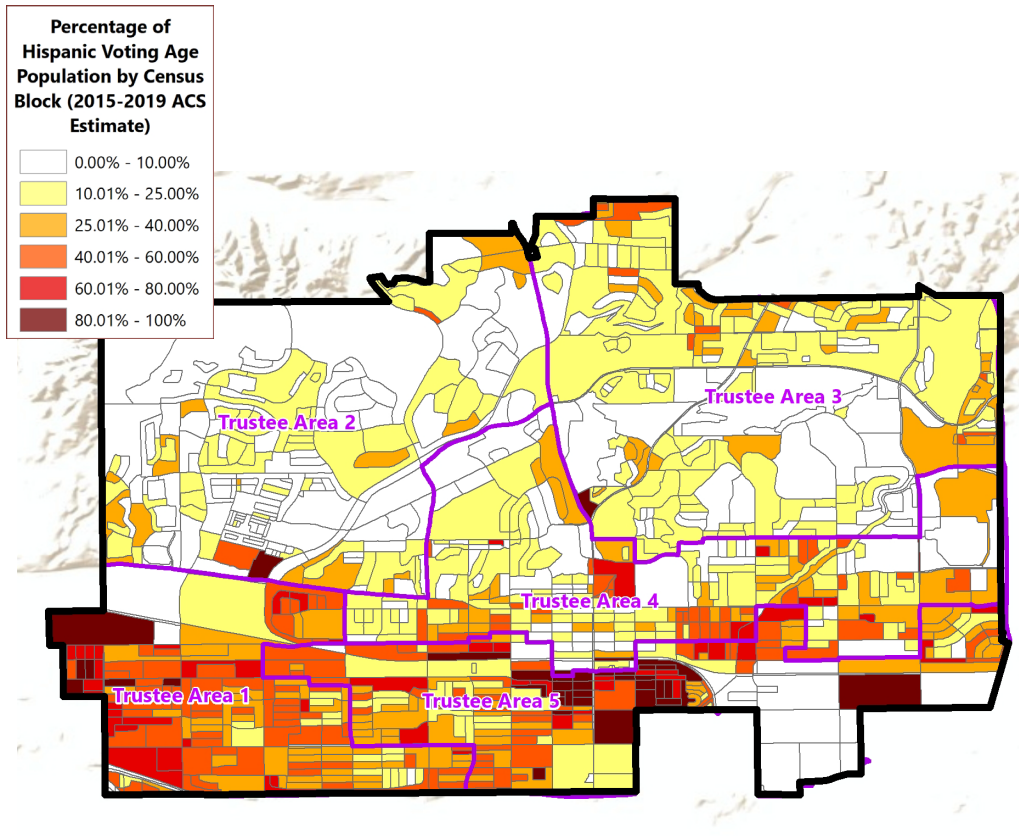
2020 CENSUS DATA



Population	Total Population		Age 18 and over	
	Total	%	Total	%
Hispanic/Latino	47,050	37.6%	34,190	34.5%
White	36,814	29.5%	32,325	32.6%
Black / African American	2,460	2.0%	2,018	2.0%
American Indian /Alaska Native	264	0.2%	235	0.2%
Asian	33,197	26.6%	26,847	27.1%
Native Hawaiian /Pacific Islander	211	0.2%	176	0.2%
Two or More Races	609	0.5%	468	0.5%
Other	4,386	3.5%	2,964	3.0%
Total	124,991	100%	99,223	100%

► DISTRICT DEMOGRAPHICS

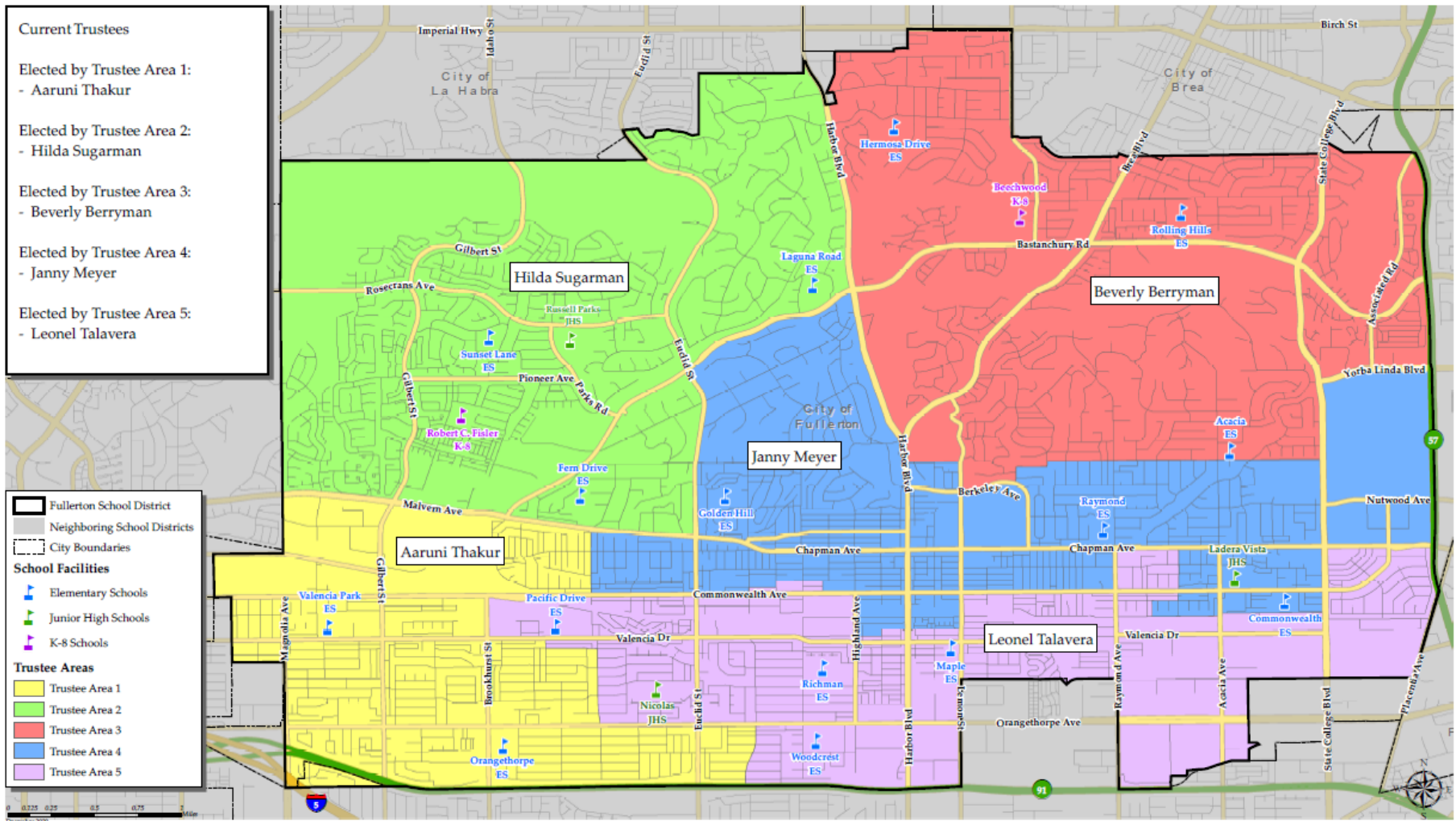
HISPANIC CITIZEN VOTING AGE POPULATION ESTIMATES



Population	2015-2019 CVAP*	
	Total	%
Hispanic/Latino	22,518	28.4%
White	34,198	43.1%
Black / African American	2,263	2.9%
American Indian / Alaska Native	145	0.2%
Asian	18,202	22.9%
Native Hawaiian/ Pacific Islander	196	0.2%
Two or More Races	1,800	2.3%
Total	79,322	100%

*Citizen Voting Age Population (CVAP);
Source: American Community Survey, 2015-2019 Data

▶ CURRENT FULLERTON SCHOOL TRUSTEE AREAS



► CURRENT FULLERTON SCHOOL DISTRICT TRUSTEE AREAS

Census 2020 Total Population:	124,991	Ideal Trustee Area Size:	24,998	Total Variance:	13.8%
--	----------------	-------------------------------------	---------------	------------------------	--------------

TRUSTEE AREA	Trustee Area 1		Trustee Area 2		Trustee Area 3		Trustee Area 4		Trustee Area 5	
	TP*	CVAP**	TP	CVAP	TP	CVAP	TP	CVAP	TP	CVAP
Population	24,527	14,244	24,731	15,734	24,317	17,392	27,433	18,546	23,983	13,406
Population Variance	-1.9%	N/A	-1.1%	N/A	-2.7%	N/A	9.7%	N/A	-4.1%	N/A
Hispanic/Latino	59.4%	48.8%	12.3%	9.9%	24.6%	17.7%	32.1%	25.6%	61.2%	46.0%
White	20.6%	30.4%	19.9%	32.8%	43.7%	57.4%	41.7%	53.7%	20.0%	35.5%
Black/African American	2.0%	3.4%	1.2%	1.1%	1.8%	2.1%	2.5%	3.1%	2.3%	4.8%
American Indian/Alaska Native	0.2%	0.0%	0.1%	0.1%	0.2%	0.0%	0.3%	0.5%	0.2%	0.3%
Asian	14.5%	15.7%	63.3%	53.7%	24.7%	20.4%	17.6%	13.5%	13.1%	10.9%
Native Hawaiian/Other Pacific Islander	0.2%	0.6%	0.1%	0.3%	0.1%	0.2%	0.2%	0.0%	0.1%	0.3%
Other	0.5%	N/A	0.3%	N/A	0.5%	N/A	0.6%	N/A	0.6%	N/A
Two or More Races	2.6%	1.1%	2.8%	2.0%	4.5%	2.1%	5.0%	3.5%	2.4%	2.3%

*Total Population; Source: Redistricting Database for California, Published by Statewide Database on September 20, 2021

**Citizen Voting Age Population (CVAP); Source: American Community Survey, 2015-2019 Data

▶ CONSIDERATIONS IN VOTING AREAS



Each area shall contain nearly equal number of inhabitants



Follow man-made and natural geographic features, as much as possible



Drawn to comply with the Federal Voting Rights Act



Respect incumbency, if possible



Compact and contiguous, as much as possible



Other local considerations



Respect communities of interest, as much as possible

▶ REDISTRICTING TIMELINE

DATE	ACTIVITY
September 16, 2021	Board Meeting: Presentation on Process for Redistricting
September 30, 2021	Cooperative Strategies receives validated 2020 Census data and evaluates population within each voting area of the Board of Education
October 12, 2021	Board Meeting: Presentation on Evaluation of Existing Voting Areas & Receive Input on Potential Adjustments
October 13 th – November 9 th	Cooperative Strategies prepares potential maps of adjusted Voting Areas
November 10, 2021	Draft Maps posted to Fullerton SD website
November 16, 2021	Board Meeting: Review Initial Scenarios
November 17 th – December 5 th	Cooperative Strategies revises scenarios based on Board and Public Input
December 6, 2021	Draft Maps posted to Fullerton SD website
December 14, 2021	Board Meeting: Review Maps and Conduct Public Hearing Board Selection of Map
January 2022	Cooperative Strategies sends Final Trustee Area Map and Descriptions to the County Registrars of Voters

A row of yellow school buses is parked in a grassy field under a cloudy sky. A large, stylized, semi-transparent 'S' graphic is overlaid on the image, framing the word 'QUESTIONS' in the center.

QUESTIONS