

FULLERTON SCHOOL DISTRICT

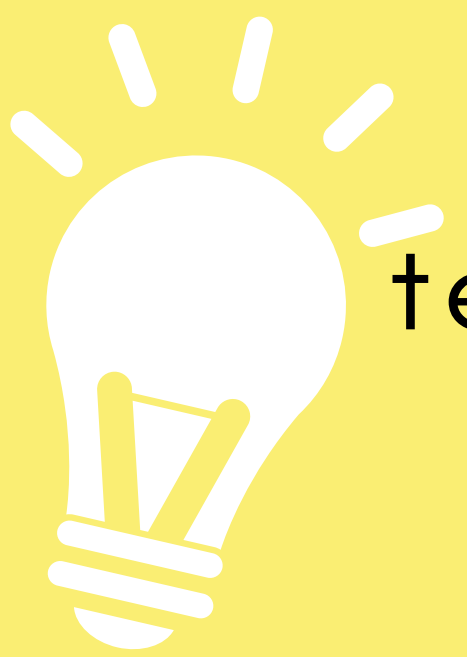
COMMUNITY, PARENTS, STUDENTS,
TEACHERS, AND STAFF

Your Voice Matters

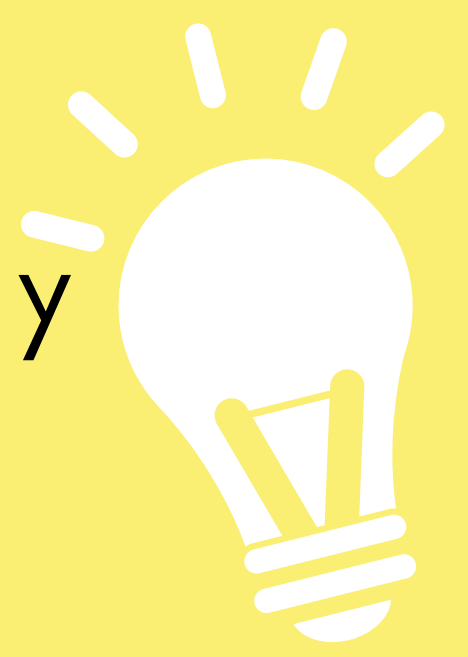
TAKE THE LCAP SURVEY

**We need your feedback on
our LCAP Plan by March 18**

bit.ly/FSDLCAP



Give us your suggestions or
tell us what we are doing well by
filling out the LCAP survey



NOT SURE WHAT THE LCAP IS?
VISIT **[BIT.LY/FSDLCAP](https://bit.ly/FSDLCAP)** FOR MORE
INFORMATION



DISTRITO ESCOLAR DE FULLERTON

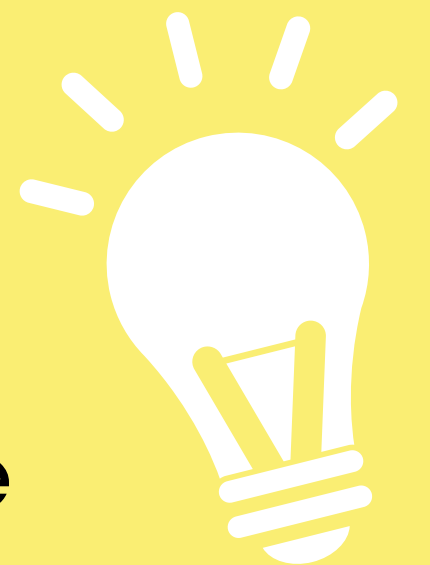
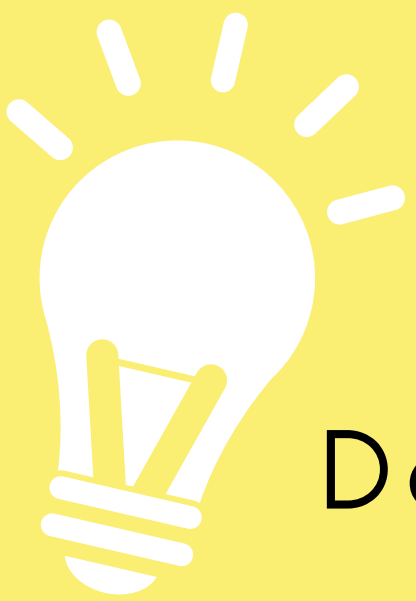
**COMUNIDAD, PADRES, ESTUDIANTES,
MAESTROS, Y PERSONAL**

Su Voz Cuenta

**COMPLETE LA ENCUESTA DEL
PLAN LCAP**

**Necesitamos sus sugerencias
para el Plan LCAP
antes del 18 de marzo**

bit.ly/FSDLCAP



Danos sus sugerencias o díganos que
estamos haciendo bien, al completar
la encuesta del Plan LCAP

¿NO ESTA SEGURO DE LO QUE ES EL PLAN LCAP?

VISITE **[BIT.LY/FSDLCAP](https://bit.ly/FSDLCAP)** PARA MÁS INFORMACIÓN



FULLERTON SCHOOL DISTRICT

풀러튼 교육구

커뮤니티, 학부모, 학생, 교사,
그리고 직원 여러분

귀하의 의견은 소중합니다

LCAP 설문조사에 참여하십시오

3월 18일까지 LCAP 계획안에 대한
여러분의 피드백이 필요합니다

bit.ly/FSDLCAP

LCAP 설문조사를 통해 교육구에 대한 제안
사항이나 무엇을 잘하고 있는지 여러분의
생각을 나눠주세요

LCAP이 뭔지 잘 모르시겠어요?

여기를 방문하세요!

[BIT.LY/FSDLCAP](https://bit.ly/FSDLCAP)

